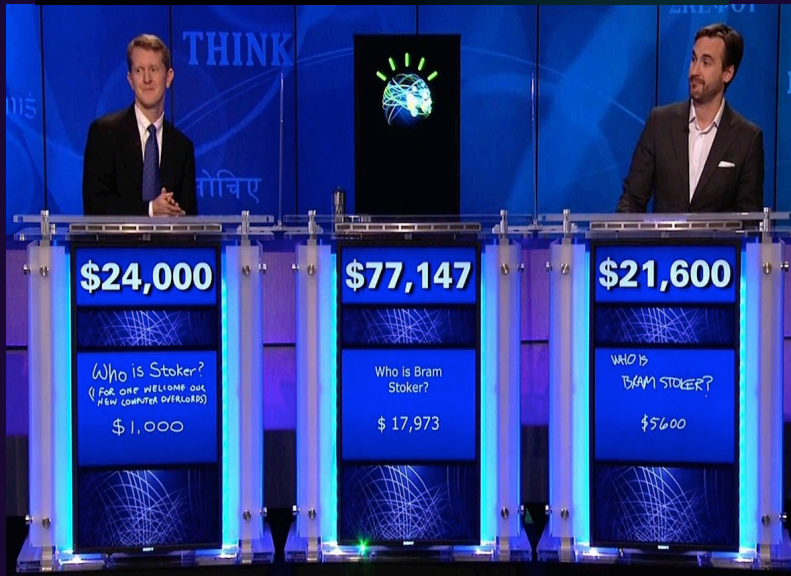
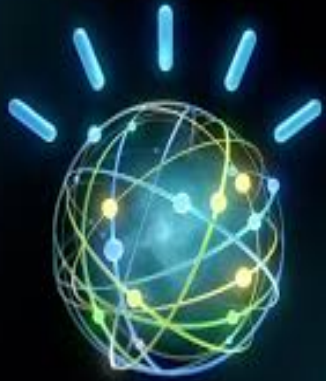


IBM WATSON

이강윤 keylee@kr.ibm.com



Welcome to the Cognitive Era.

A new era of technology.
A new era of business.
A new era of thinking.

왓슨은 인간의 뇌를 닮은 컴퓨팅 기술

학습하고 이해하며, 추론과 탐구할 수 있고, 망각하지 않는 근거에 기반한 기술을 적용하여 왓슨 솔루션이 개발되었습니다.



인간의 언어로 상호작용

음성과 이미지인식, 시각화 등 인간의 방식으로 상호작용하며 인간과 서로 가르치고 배우며 진화

인공지능과 기계학습의 결합

감지하고 예측하고, 생각할 수 있도록 하는 인공지능과 기계학습을 통해 훈련되는 학습 시스템

전문지식으로 의사결정 향상

언어, 용어 등 전문분야에 대한 지식을 쌓고 이를 통해 최적의 데이터를 만들어 의사결정을 지원

왓슨 Deep Q&A 프로세스

Multiple interpretations

Hundreds of answer sources

- Primary search
- Candidate answer generation

Tens of thousands of evidence sources and scores

- Answer scoring
- Evidence retrieval
- Deep evidence scoring

Learned models

- Combine and weigh evidence

Natural language processing

Information retrieval

Knowledge representation and reasoning

Deep analytics

Machine learning

Parallel and distributed computing



Question

Inquiry analysis

Decomposition

Hypothesis generation

Hypothesis and evidence scoring

Synthesis

Final confidence merging and ranking

Answer



인공지능을 통한 혁신은 다양한 산업에 적용됩니다.

Finance & Law



이번 법제의 개편 방향은?
가장 높은 금액의 IPO는?

앞으로의 고용 시장의 전
망은 어떤가요?

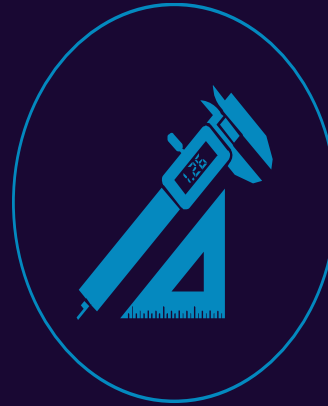
Health



신약의 테스트나 새로운 임상
실험의 결과를 예측하려면?

보건 정책의 방향은
어디에 중점을 두나요?

Engineering



새로운 제품에 관계되는 기술
트렌드나 IP 등의 내용은?

이 발명에 관계된
특허 출원이 있나요?

Public Security



공공의 안전을 위협하는 새로운
시도나 관계 형성에 관한 징후는?

X 질병 사태에 대해 병원은
어떤 대처를 해야 하나요?

현재 우리는 많은 시간을 읽고 이해하고 조사하는데 보냅니다.

Finance & Law



74,000 pages of tax code¹
3,000 federal crimes²

Health



24 million MedLine articles³
7,000 drugs⁴, 21,000 genes⁵

Engineering



Over 9 million US patents⁶

Public Security



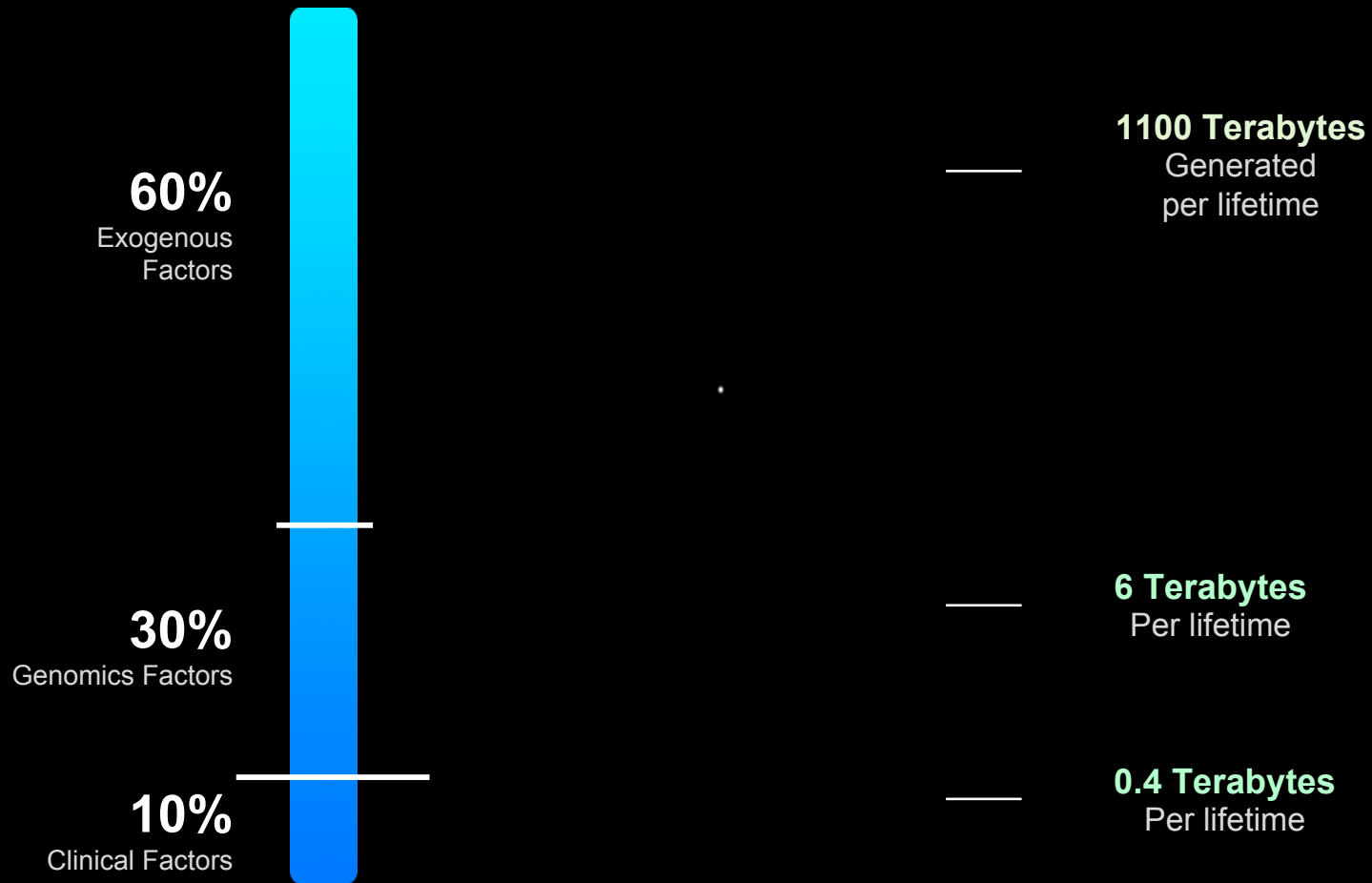
50,000 Intelligence reports annually⁷

... 보다 전략적인 접근이 요구됩니다.

1. Townhallfinance.com
2. Library of Congress
3. NCBI.nlm.nih.gov
4. Drugbank.com

5. www.genome.gov
6. Wikipedia.com entry on the US Patent and Trademark Office
7. Priest, Data, Arkin, William. [Top Secret American; A hidden world growing beyond Control](#). The Washington Post. 2010.

Watson Health / IoT / Analytics



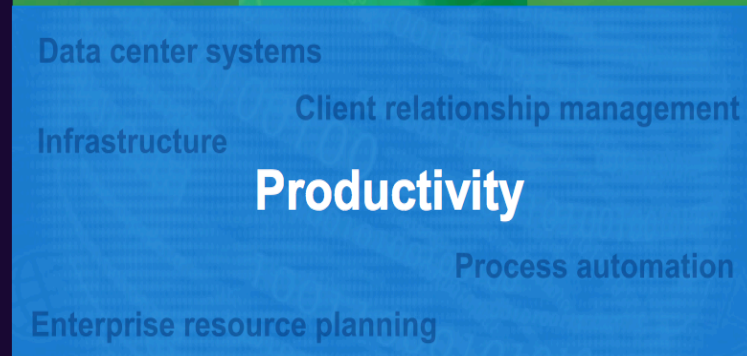
Cognitive는 기존 IT 시장에 새로운 기회를 만듭니다.

Opportunity for
decision-making
support
2025



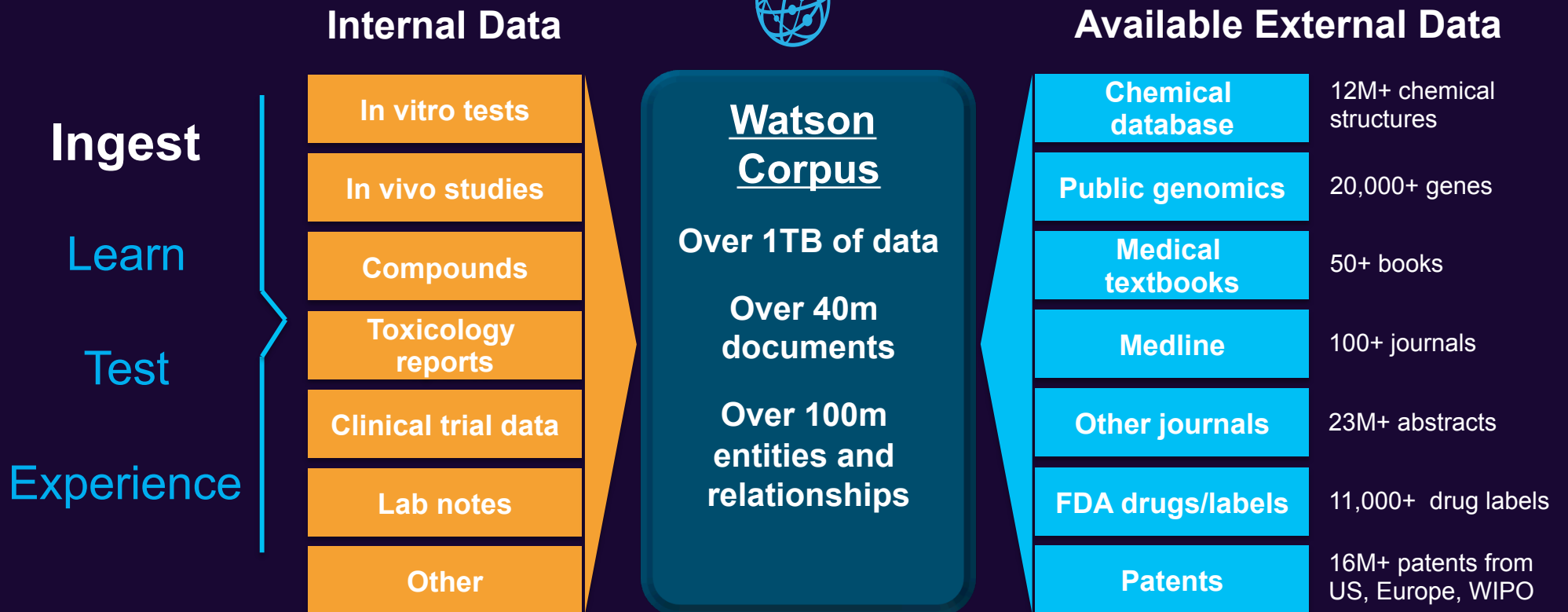
~\$2T

Traditional global
IT spend
2016




~\$1.2T

Watson은 내 외부에 있는 데이터를 연결하고 분석하여 새로운 인사이트를 아주 짧은 시간내에 도출합니다.



선진 의료 기관은 이미 Watson을 통한 혁신을 구현합니다.

Ongoing Training Partner



Memorial Sloan Kettering Cancer Center..

Watson for Oncology, trained by Memorial Sloan Kettering
available in clinical use in lung, breast, colon and rectal cancer



Bumrungrad International Hospital
5 year agreement for Watson for Oncology

THE UNIVERSITY OF TEXAS
MD Anderson Cancer Center
 Making Cancer History[®]

MD Anderson
Introduced proprietary solution with Watson for clinical use for Leukemia and Molecular Targeted Therapies


MAYO CLINIC



Mayo Clinic
Completed testing with Clinical Trial Matching for lung, breast, colon and rectal cancer

BCM[®]
 Baylor College of Medicine

Baylor College of Medicine
Published results of use with Watson Discovery Advisor – identified 7 targets for P53 activation within weeks




Watson Genomics Advisor
Secured 13 Cancer and Academic medical centers for beta testing



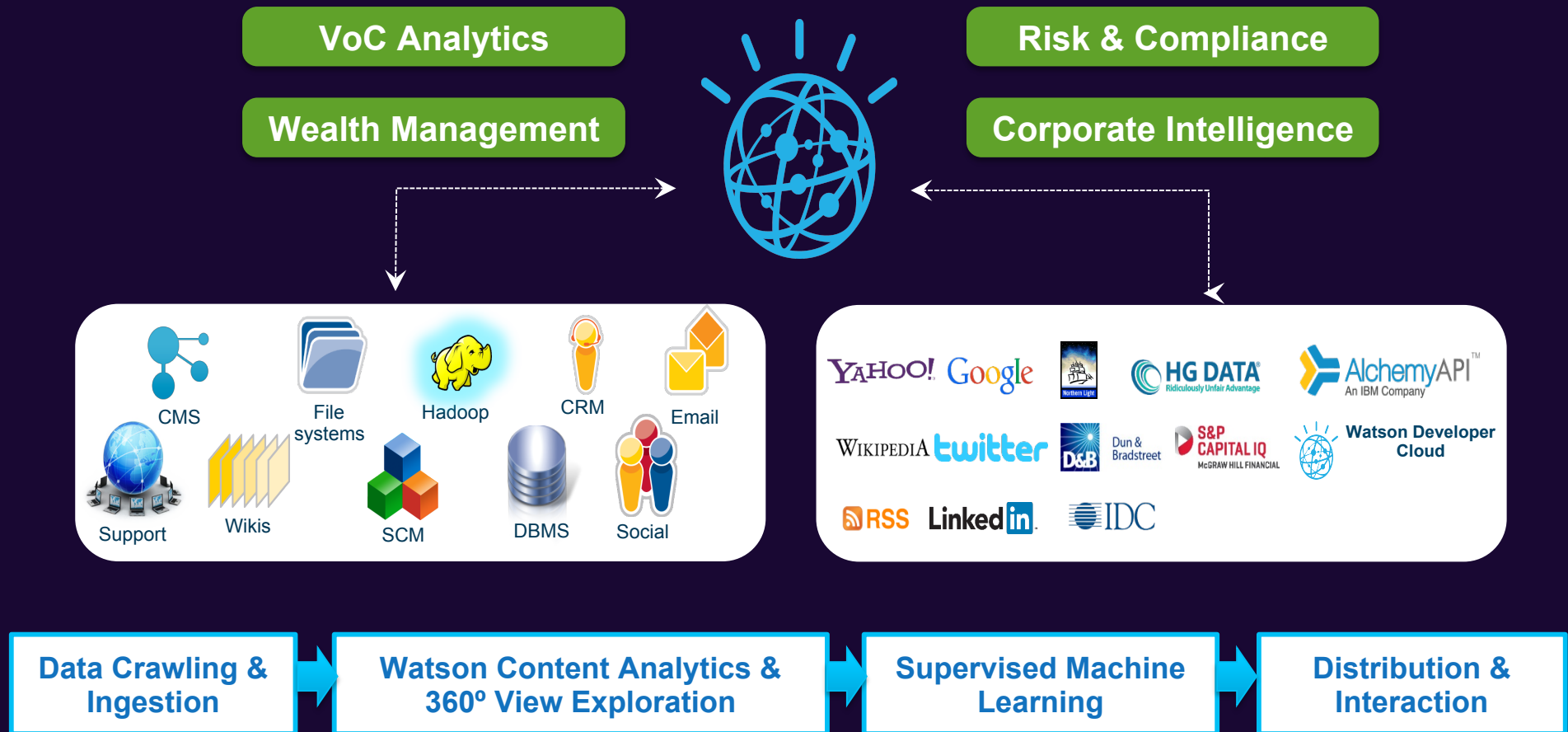
Department of Veterans Affairs
Selected Watson to analyze EMRs in a demo project

MAYO CLINIC



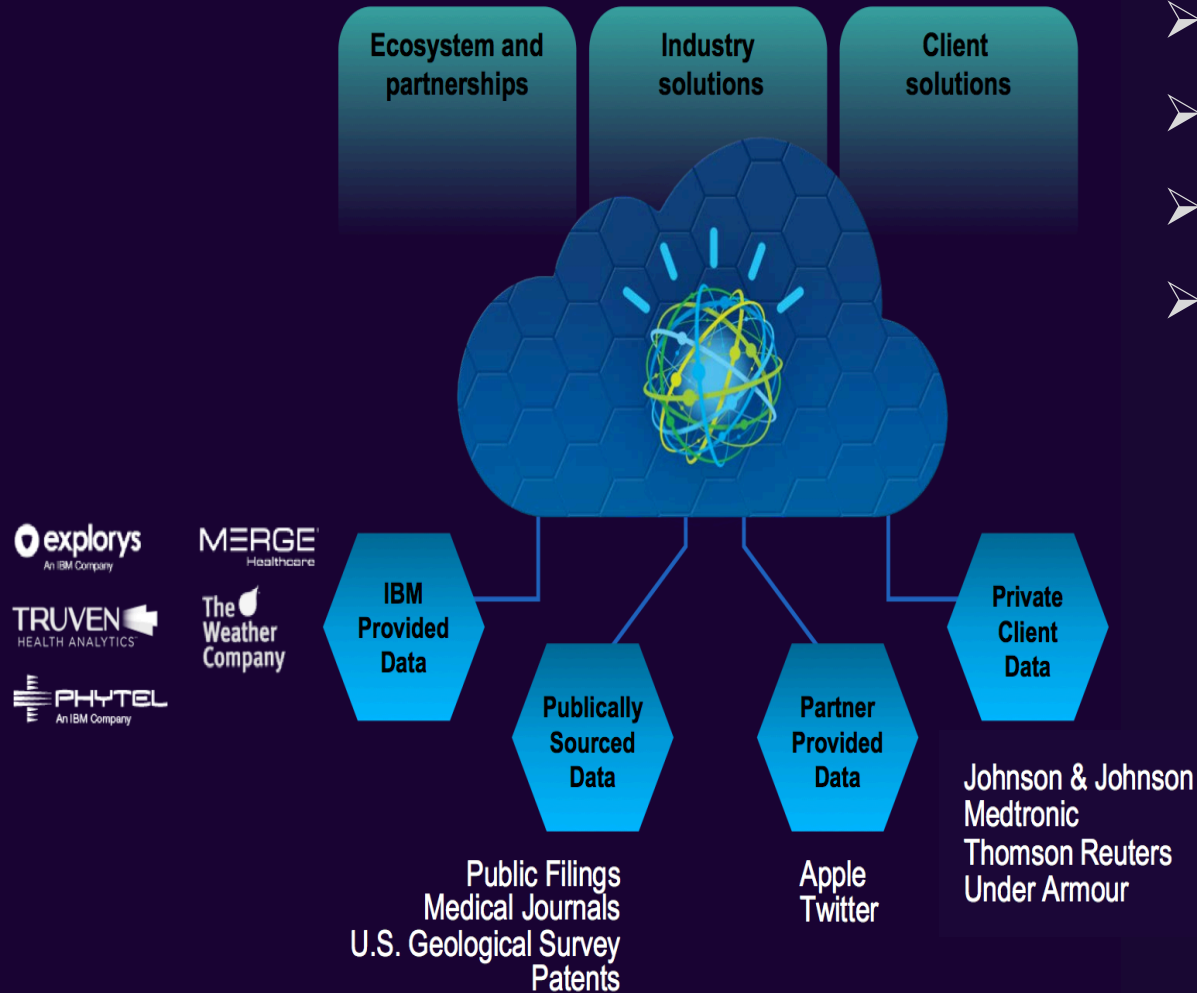
Mayo Clinic
Selected Watson to analyze EMRs for Clinical Efficiency and Effectiveness Program

Watson은 기업내부와 외부의 정형 및 비정형 데이터 융합을 통하여 솔루션을 구현합니다.



Watson 비즈니스 플랫폼 : Watson-as-a-Service

- Largest cognitive ecosystem
- Deep domain expertise
- Most powerful and scalable
- Most essential industry dataset



5 비즈니스 모델

1. Data access / pay-per-insight
2. Subscription (number of users)
3. Shared value with partners
4. Revenue share (ecosystem)
5. Global partners (licensing)

The Watson that competed on *Jeopardy!* in 2011 comprised what is now a single API—**Q&A**—built on **five underlying technologies**.

Since then, Watson has grown to a family of **28 APIs by 2015**.

By the end of 2016, there will be nearly **50 Watson APIs**—with more added every year.



왓슨플랫폼은 블루믹스 클라우드에 구현되었습니다.

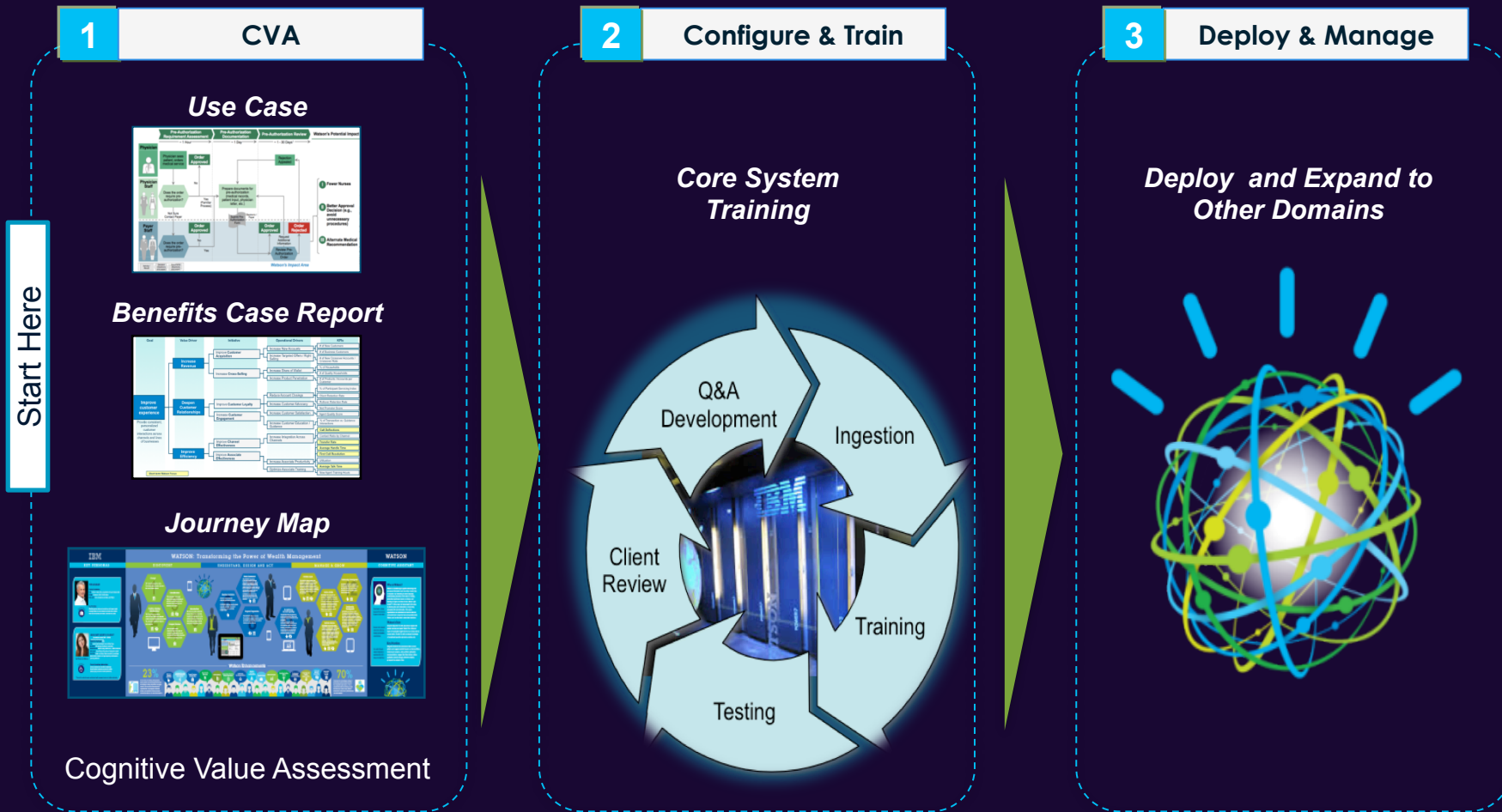
- Build your application using callable Watson Service APIs at ibm.com/bluemix

- AlchemyLanguage
- AlchemyVision
- AlchemyNews
- Concept Expansion
- Concept Insights
- Language Identification
- Language Translation
- Natural Language Classifier
- Personality Insights
- Relationship Extraction
- Speech to Text
- Text to Speech
- Tradeoff Analytics



- Can be combined with the 100s of other available services on Bluemix

Watson과의 솔루션 구현(Journey)은 세단계로 구성되어 집니다.



Watson의 Human Machine Interaction



<http://www.softbank.jp/robot/special/pepper/>



Watson은 전세계 24개의 산업에 적용되고 있습니다.

530 Partners

150 Partner Application

100+ University Course

32 Cognitive Service

80,000 Cognitive Developers on Bluemix

1B+ API Calls / Month

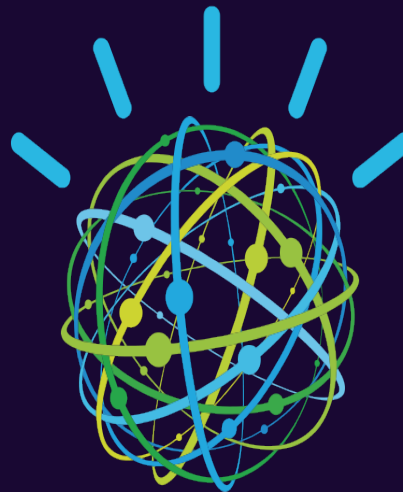
- 2016 Feb -



헬스케어



금융



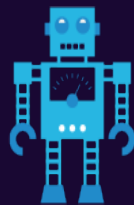
쇼핑과 호텔



고객서비스



요리사



로봇/일본어



소셜커맨드센터



리테일/패션

우리는 **Watson**으로 무엇을 해야 할까요?



facebook.com/ibmwatson



ibmwatson.com



[@ibmwatson](https://twitter.com/ibmwatson)



Watson Business Unit
Lee, KangYoon : keylee@kr.ibm.com